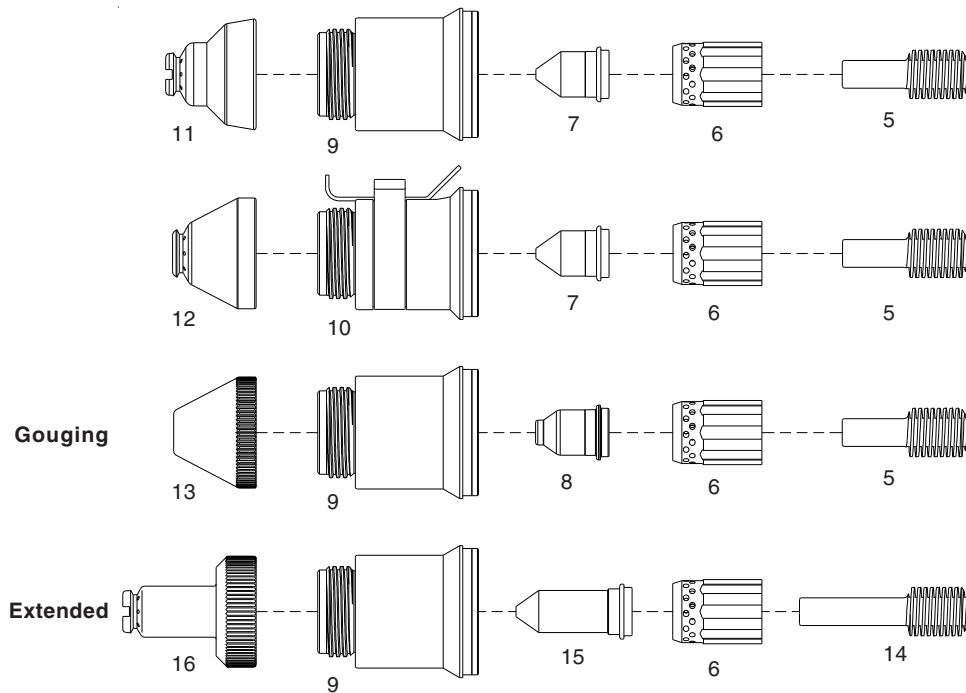
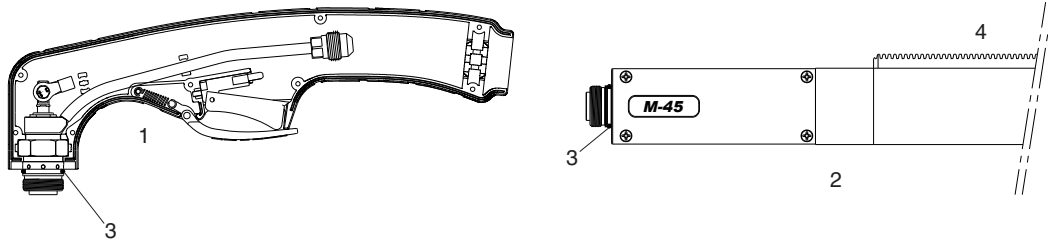


2016.06.A.GC

**HYPERTHERM<sup>®</sup>**  
**POWERMAX 45<sup>®</sup> H45<sup>®</sup> M45<sup>®</sup>**

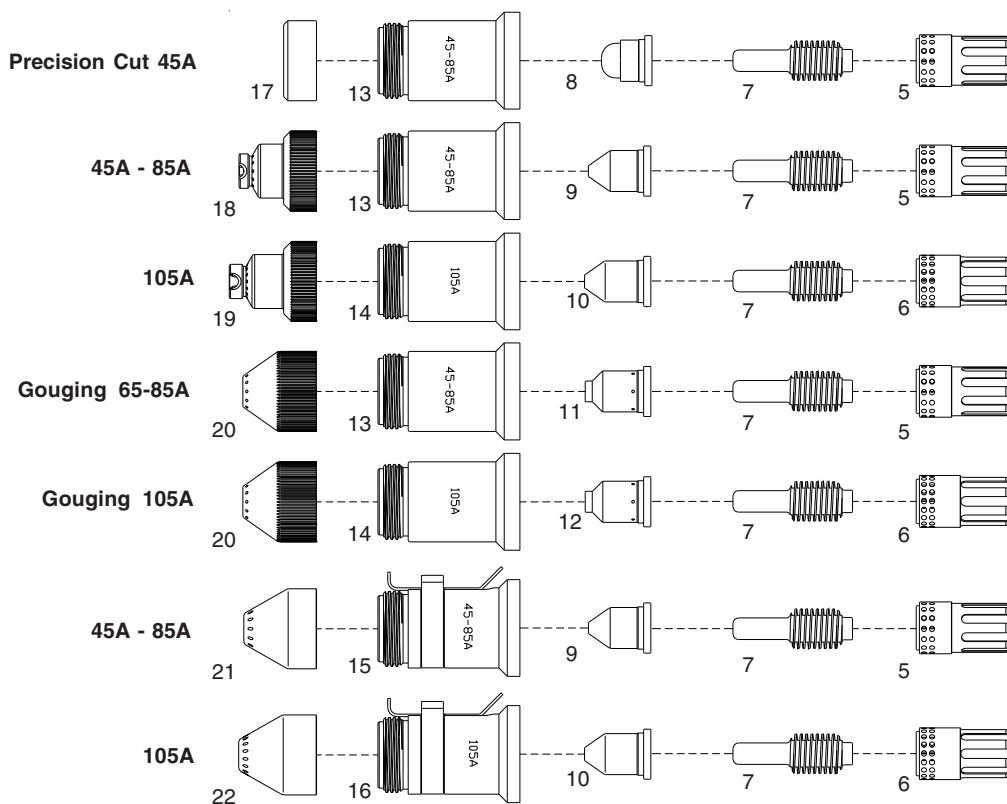
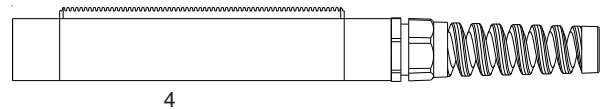
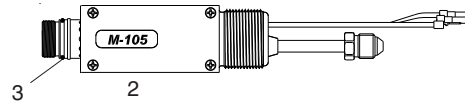
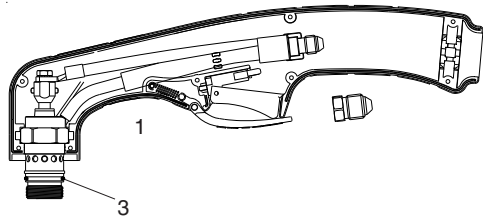


| No. | Ref.   | Code      | Description                                     | No. | Ref.     | Code    | Description                |
|-----|--------|-----------|---|-----|----------|---------|----------------------------|
| 1   | 228346 | 03600/KIT | <b>H-45</b> Hand Torch Head with Handle         | 7   | 220671TD | 51206   | Tip 45A                    |
|     |        | 03606     | Handle  | 8   |          | 51206G  | Tip 45A Gouging            |
| 2   | 228320 | 03610/KIT | <b>M-45</b> Machine Torch Head with Tube & Rack | 9   |          | 60305T  | Retaining cap              |
| 3   | 058503 | 07300.60  | O-Ring  | 10  |          | 60305TH | Retaining cap <b>OHMIC</b> |
| 4   |        | 07219     | Positioning Tube with Rack                      | 11  | 220674TD | 51923   | Hand shield                |
| 5   | 220669 | 52574     | Electrode                                       | 12  | 220673TD | 51924   | Machine shield             |
| 6   | 220670 | 60041     | Swirl ring Max Life                             | 13  |          | 51924G  | Gouging shield             |
|     | 220670 | 60041E    | Swirl ring                                      | 14  |          | 52574L  | Extended Electrode         |
|     |        |           |   | 15  |          | 51206L  | Extended Tip 45A           |
|     |        |           |   | 16  |          | 51923L  | Extended Hand shield       |

**HYPERTHERM<sup>®</sup>**

**POWERMAX 65<sup>®</sup> H65<sup>®</sup> M65<sup>®</sup>  
POWERMAX 85<sup>®</sup> H85<sup>®</sup> M85<sup>®</sup>**

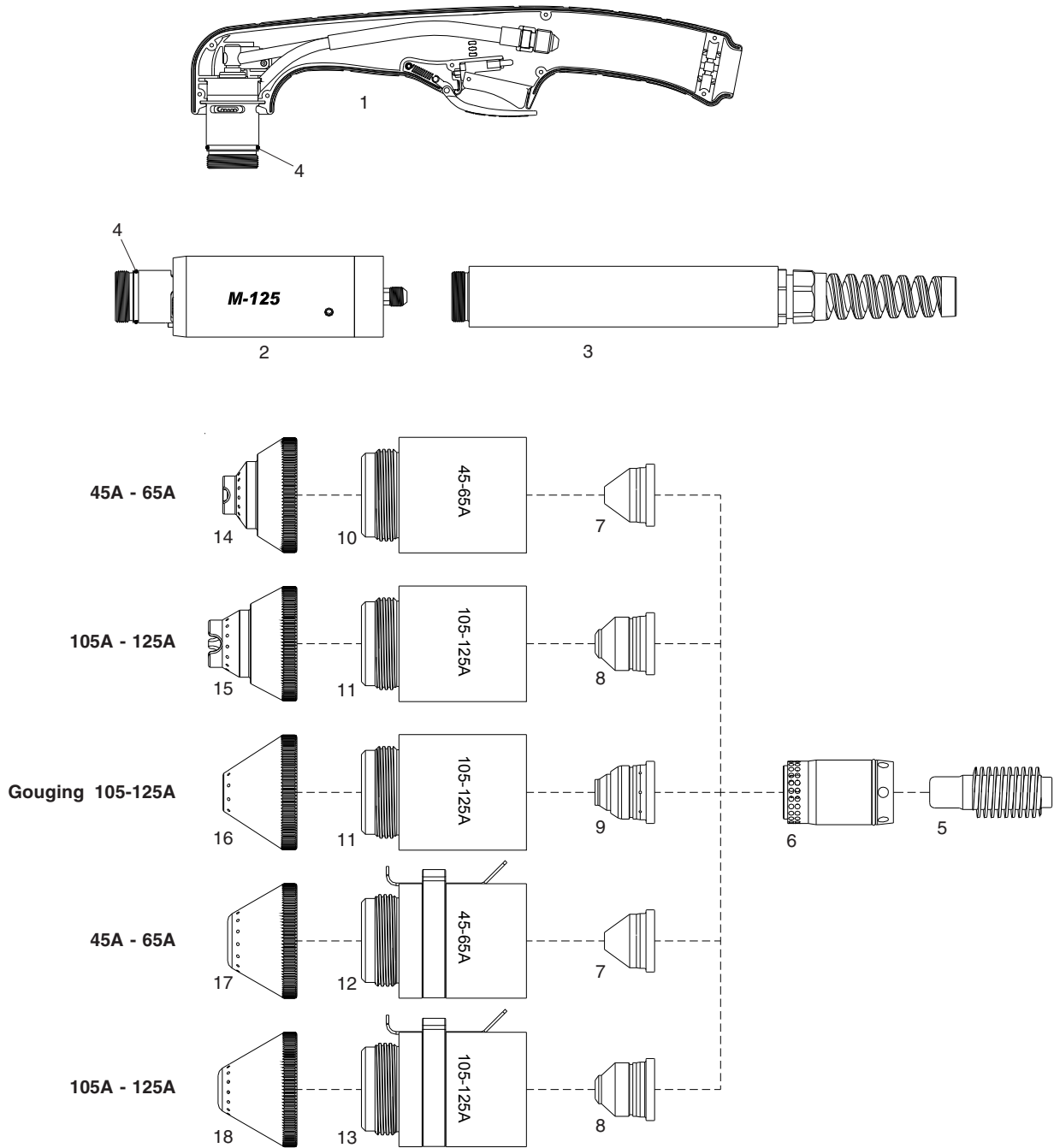
**POWERMAX 105<sup>®</sup> H105<sup>®</sup> M105<sup>®</sup>  
POWERMAX 1000/1250/1650<sup>®</sup> HRT<sup>®</sup> MRT<sup>®</sup> Retrofit torch**



| No. | Ref.     | Code            | Description                             | No.      | Ref.     | Code     | Description                                |
|-----|----------|-----------------|---|----------|----------|----------|--|
| 1   | 228714   | 03700/KIT H-105 | Hand Torch Head w/ Handle for 65/85/105 | 220816TD | 51418    |          | Tip 85A (for use with item #13 or 15)      |
|     | 228958   |                 |   |          | 10       | 220990TD | 51419                                      |
|     |          | 03705           | Handle                                  | 11       |          | 51417G   | Tip 65-85A Gouging (for use with item #13) |
| 2   | 228716   | 03710/KIT M-105 | Machine Torch Head                      | 12       |          | 51418G   | Tip 105A Gouging (for use with item #14)   |
| 3   | 058519   | 03700.60        | O-Ring                                  | 13       |          | 60309TA  | Retaining cap 45-85A                       |
| 4   | 228737   | 07219           | Positioning Tube with Rack              | 14       |          | 60309TB  | Retaining cap 105A                         |
| 5   | 220857   | 60042           | Swirl ring 45-85A Max Life              | 15       |          | 60309THA | Retaining cap 45-85A <b>OHMIC</b>          |
|     | 220857   | 60042E          | Swirl ring 45-85A                       | 16       |          | 60309THB | Retaining cap 105A <b>OHMIC</b>            |
| 6   | 220994   | 60040           | Swirl ring 105A Max Life                | 17       | 220955   | 51928    | Deflector                                  |
|     | 220994   | 60040E          | Swirl ring 105A                         | 18       | 220818TD | 51921    | Hand shield 45-85A                         |
| 7   |          | 52677           | Electrode 45-105A                       | 19       | 220992TD | 51926    | Hand shield 105A                           |
| 8   | 220930   | 51415           | Tip 45A Precision Cut                   | 20       |          | 51927G   | Gouging shield                             |
| 9   | 220941TD | 51416           | Tip 45A (for use with item #13 or 15)   | 21       | 220817TD | 51922    | Machine shield 45-85A                      |
|     | 220819TD | 51417           | Tip 65A (for use with item #13 or 15)   | 22       | 220993TD | 51927    | Machine shield 105A                        |

2016.06.A.GC

**HYPERTHERM<sup>®</sup>**  
**POWERMAX 125<sup>®</sup> H125<sup>®</sup> M125<sup>®</sup>**



| No. | Ref.     | Code            | Description                                | No. | Ref.       | Code    | Description                                 |
|-----|----------|-----------------|--|-----|------------|---------|---|
| 1   | 428158   | 03900/KIT H-125 | Hand Torch Head w/handle                   | 9   | 51424G     |         | Tip 105-125A Gouging (for use with item 11) |
|     |          | 03905           | Handle                                     | 10  | 220977/65  | 60311A  | Retaining cap 35-65A                        |
| 2   | 428147   | 03910/KIT M-125 | Machine Torch head                         | 11  | 220977/125 | 60311B  | Retaining cap 105-125A                      |
| 3   | 428144   | 03916           | Fiberglass Positioning Tube                | 12  | 420156/65  | 60311HA | Retaining cap <b>OHMIC</b> 35-65A           |
| 4   | 428253   | 03900.60        | O-Ring                                     | 13  | 420156/125 | 60311HB | Retaining cap <b>OHMIC</b> 105-125A         |
| 5   |          | 52678           | Electrode                                  | 14  | 420172TD   | 51916   | Shield Cap, Hand, 35-65A                    |
| 6   | 220997   | 60039           | Swirl ring 35A - 125A                      | 15  | 420000TD   | 51917   | Shield Cap, Hand, 105-125A                  |
| 7   | 420158TD | 51420           | Tip 45A (for use with item #10 or 12)      | 16  |            | 51919G  | Shield Cap, Gouging 105-125A                |
|     | 420169TD | 51421           | Tip 65A (for use with item #10 or 12)      | 17  | 420168TD   | 51918   | Shield Cap, Machine, 35-65A                 |
| 8   | 220975TD | 51424           | Tip 105-125A (for use with item #11 or 13) | 18  | 220976TD   | 51919   | Shield Cap, Machine, 105-125A               |