

PLASMA CUTTING

The new series of Torches
with High Frequency Start

NEW
Coaxial Cable

H-35 35A at 60%

LT-50 50A at 60%

LT-70 70A at 60%

LT-100 100A at 60%

LT-120 120A at 60%

LT-150 150A at 60%

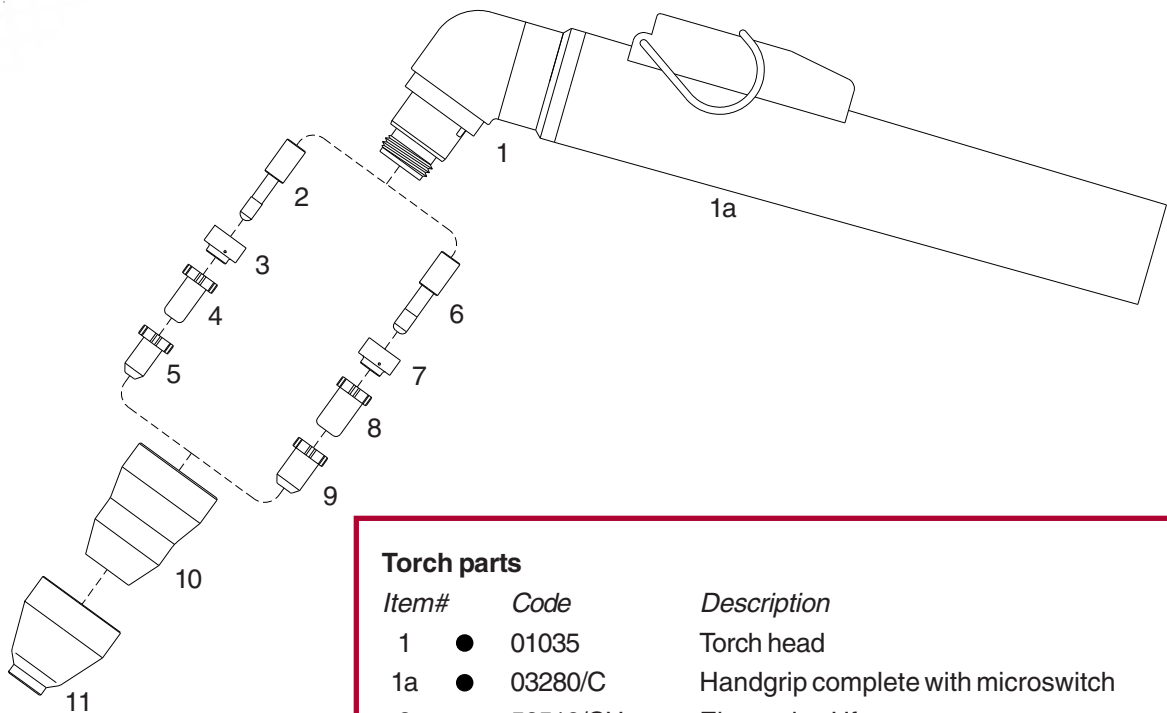
● Higher performances

● Cleaner cut

● Faster speed

Technical Data H35

Max Current : 35 Amps
Duty Cycle: 35 Amps -60%
Gas: Air (clean and dry)
Gas Pressure: 70-80 psi (4.8-5.5 bar)
Gas Flow: 190 scfh (90 lpm)
Post Flow Time : ca 60 sec. recommended
Pilot : Electrode to Tip
Ignition: HF



● Standard Layout

Torch parts

Item#	Code	Description
1	● 01035	Torch head
1a	● 03280/C	Handgrip complete with microswitch
2	● 52519/CU	Electrode - Hf
3	● 60050	Gas distributor
4	● 51290	Tip ø 0.8
	51292	Tip ø 1.2 - Gouging - Grove air
5	51291	Tip ø 0.8 - Drag cut air
6	52523/CU	Electrode, long life - Hf.
7	60051	Gas distributor, long life
8	51288	Tip ø 0.8 - Stand off, long life
9	51289	Tip ø 0.8 - Drag, long life
10	● 60347	Shield cup
11	● 60338	Shield cup

Accessories

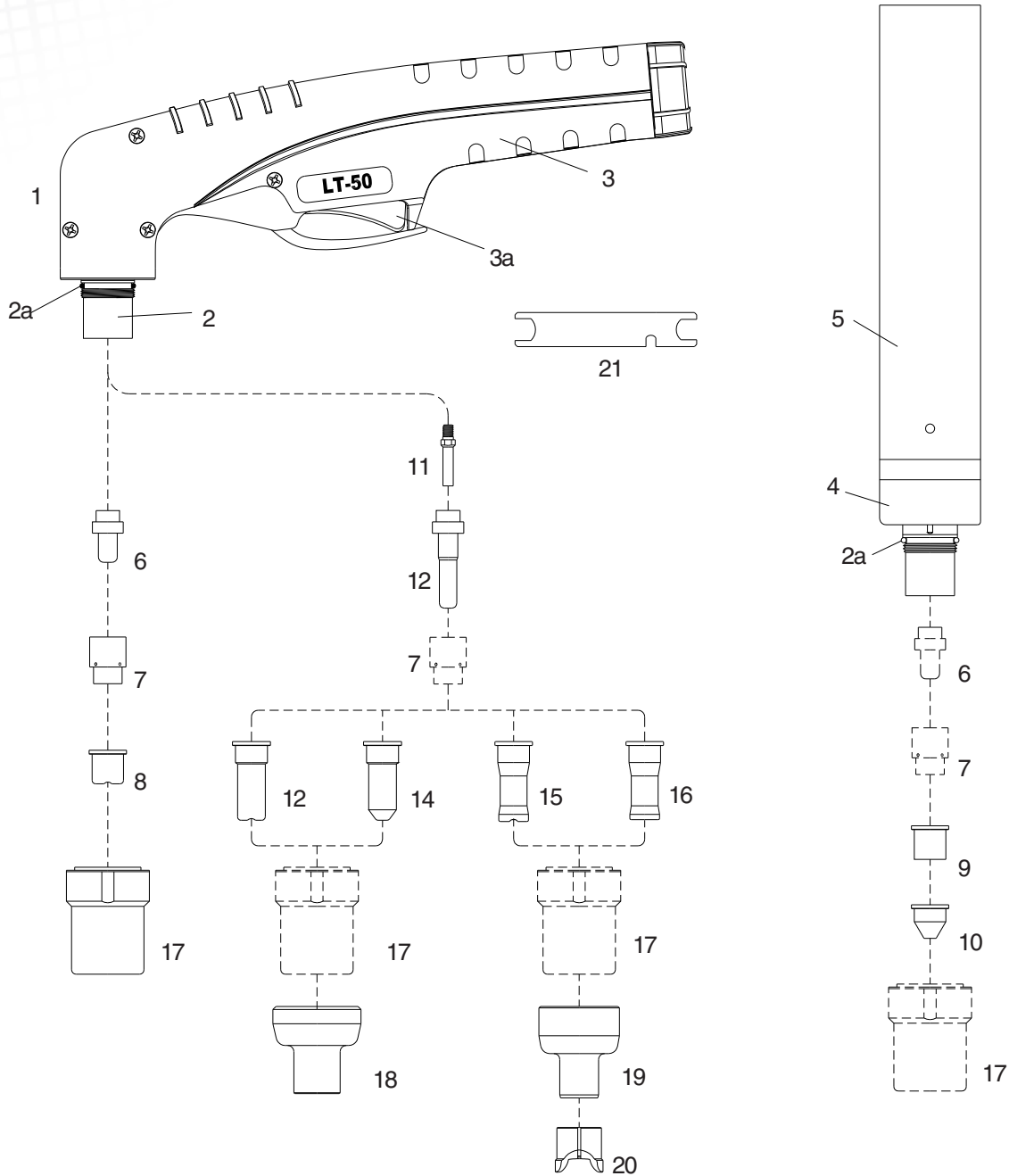
51846	Circle cutting attachment
51803	Cutting guide

Torches and Leads

see page # 14

Technical Data

Max Current :	50 Amps
Duty Cycle:	50 Amps -60%
Gas:	Air
Gas Pressure:	70 psi (4.5-5.0 bar)
Gas Flow:	340 scfh (160 lpm)
Post Flow Time:	90 sec. recommended
Pilot :	Electrode to Tip
Ignition:	HF



● **Standard Layout**
H - Hand Torch
M - Machine Torch



Replacement Parts

Torch parts

Item#	Code		Description
	H	M	
1		01001/KIT	Torch Head complete with handle
2	●	01001	Hand torch head
2a	●	●	01000.60 O - Ring
3	●	09606	Handgrip with microswitch
3a	●	07301.20	Switch
4		●	03300 Machine torch head
5		●	03310 Machine handle
6	●	●	52512/L Electrode - Hf.
7	●	●	60001 Swirl ring
8	●		51100 Tip \varnothing 1.0
			51095 Tip long life \varnothing 1.0
			51100/S Tip long life \varnothing 1.1
9		●	51099 Flat tip \varnothing 1.0
10			51098 Conical tip \varnothing 1.0 (Lo - Amp.)
11			01090.42 Extended diffusor
12			52513/L Extended electrode - Hf.
13			51102 Extended tip, \varnothing 1.0
			51095/L Extended tip, long life \varnothing 1.0
			51102/S Extended tip, long life \varnothing 1.1
14			51101 Extended conical tip \varnothing 1.0 (Lo - Amp.)
15			51090 Extended tip long life \varnothing 1.0 (for use with item 19 only)
16			51091 Extended tip long life \varnothing 1.1 (for use with item 19 and 20 only)
17	●	●	60320 Nozzle retaining cap
18			51965 Shield cup, hand (for extended tips item 13 and 14 only)
19			51966 Shield cup, hand (for extended tips item 15 and 16 only)
20			51973 Spacer for contact cutting, hand (for extended tips item 15 and 16 only)
21			60368 Wrench for diffusor

Accessories

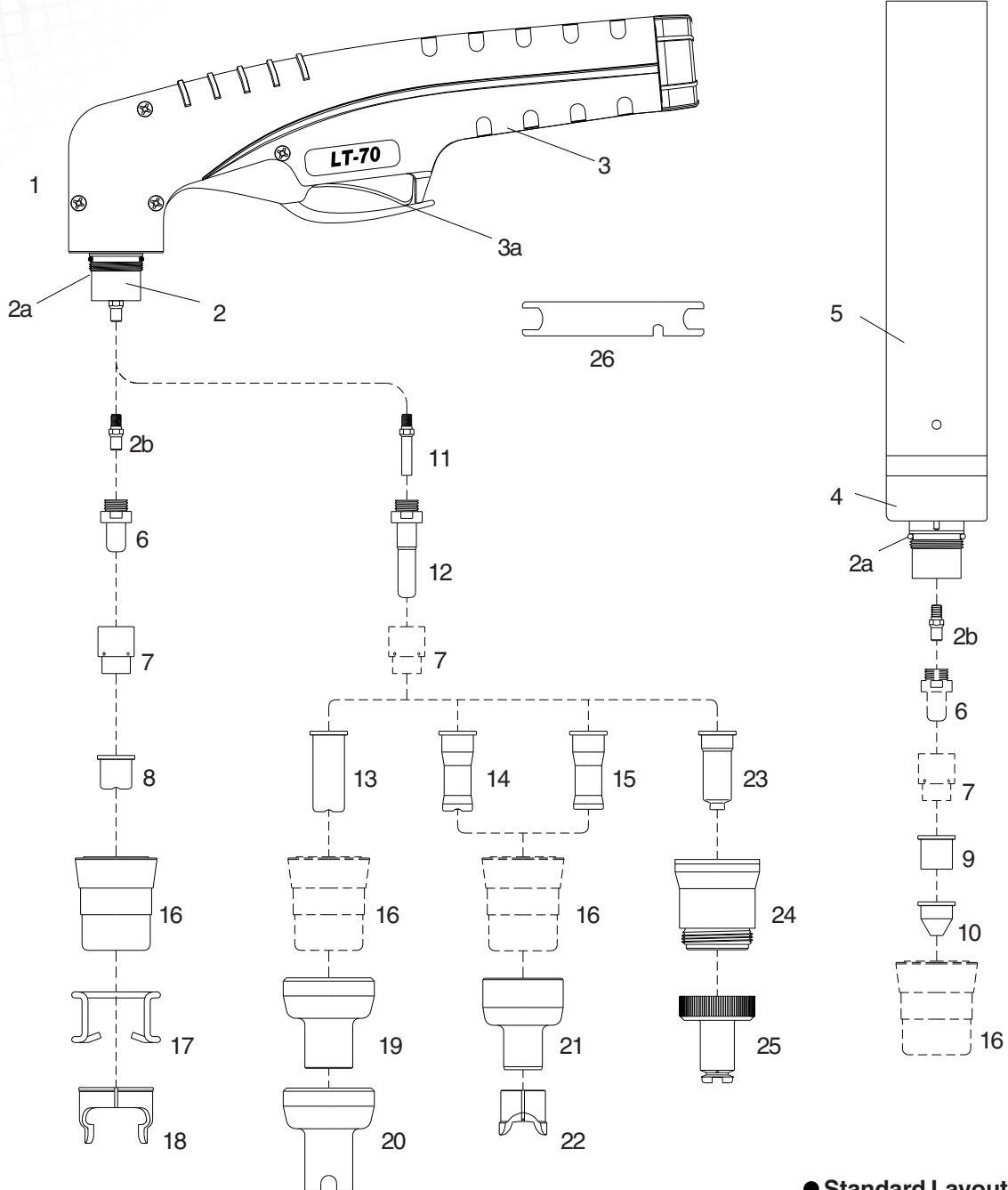
51850	Circle cutting attachment
51806	Cutting guide

Torches and Leads

see page # 14

Technical Data

Max Current :	70 Amps
Duty Cycle:	70 Amps -60%
Gas:	Air
Gas Pressure:	70 psi (4.5-5.0 bar)
Gas Flow:	360 scfh (170 lpm)
Post Flow Time:	90 sec. recommended
Pilot :	Electrode to Tip
Ignition:	HF



● Standard Layout
 H - Hand Torch
 M - Machine Torch



Replacement Parts

Torch parts

Item#	H	M	Code	Description
1			01071/KIT	Torch Head complete with handle
2	●		01071	Hand torch head
2a	●	●	01000.60	O - Ring
2b	●	●	01070.42	Diffusor
3	●		09606	Handgrip with microswitch
3a	●		07301.20	Switch
4		●	03370	Machine torch head
5		●	03310	Machine handle
6	●	●	52551	Electrode
7	●	●	60001	Swirl ring
8			51100.09	Tip ø 0.9 - 35A
			51095	Tip long life ø 1.0 - 50A
			51100/S	Tip long life ø 1.1 - 60A
	●		51096	Tip long life ø 1.2 - 70A
9			51099	Flat tip ø 1.0
		●	51099.12	Flat tip ø 1.2
10			51098	Conical tip ø 1.0
			51098.12	Conical tip ø 1.2
11			01090.42	Extended diffusor
12			52553	Extended electrode
13			51102.09	Extended tip ø 0.9 - 35A
			51095/L	Extended tip long life ø 1.0 - 50A
			51102/S	Extended tip long life ø 1.1 - 60A
			51096/L	Extended tip long life ø 1.2 - 70A
14			51090	Extended tip long life 20-40A (for use with item 22 only)
15			51091	Extended tip long life ø 1.1 - 60A (for use with item 22 and 23 only)
			51092	Extended tip long life ø 1.2 - 70A (for use with item 22 and 23 only)
16	●	●	60321	Nozzle retaining cap
17	●		51901	Spacer spring
18			60363	Double pointed spacer
19			51970	Shield cup, hand (for extended tip 51095/L)
20			51971	Spacer for contact cutting, hand (for extended tips 51102/S and 51096/L)
21			51966	Shield cup, hand (for extended tips item 14 and 15 only)
22			51973	Spacer for contact cutting, hand (for extended tips item 14 and 15 only)
23			51097.10	Extended Tip, 50A, Shielded
			51097.11	Extended Tip, 60A, Shielded
			51097.12	Extended Tip, 70A, Shielded
24			60321C	Shield Cup Body CW
25			60503L	Extended Shield Cap 50-70A
26	●	●	60368	Wrench for electrode

Accessories

51849	Circle cutting attachment
51801	Cutting guide

Torches and Leads

see page # 14



LT-100 M100

Replacement Parts

Torch parts

Item#	Code		Description
	H	M	
1		01076/KIT	Torch Head complete with handle
2	●	01076	Hand torch head
2a	●	● 01000.60	O - Ring
2b	●	● 01090.42	Diffusor
3	●	09606	Handgrip with microswitch
3a	●	07301.20	Switch
4		● 03375	Machine torch head
5		● 03310	Machine handle
6	●	● 52553	Electrode
7	●	● 60001	Swirl ring
8		51090	Tip long life ø 1.0 -20-40A (for use with item 11 only)
9		51091	Tip long life ø 1.1 - 60A (for use with item 11-12 only)
		51092	Tip long life ø 1.2 - 70A (for use with item 11-12 only)
	●	● 51093	Tip long life ø 1.3 - 90-100A (for use with item 11-12 only)
10	●	● 60321	Nozzle retaining cap
11	●	● 51972	Shield cup, hand
12	●	51973	Spacer for contact cutting, hand
13		51097.10	Extended Tip, 50A, Shielded
		51097.11	Extended Tip, 60A, Shielded
		51097.12	Extended Tip, 70A, Shielded
		51097.13	Extended Tip, 90-100A, Shielded
14		60321C	Shield Cup Body CW
15		60503L	Extended Shield Cap 50-70A
16		60504L	Extended Shield Cap 80-100A
13	●	● 60368	Wrench for electrode

Accessories

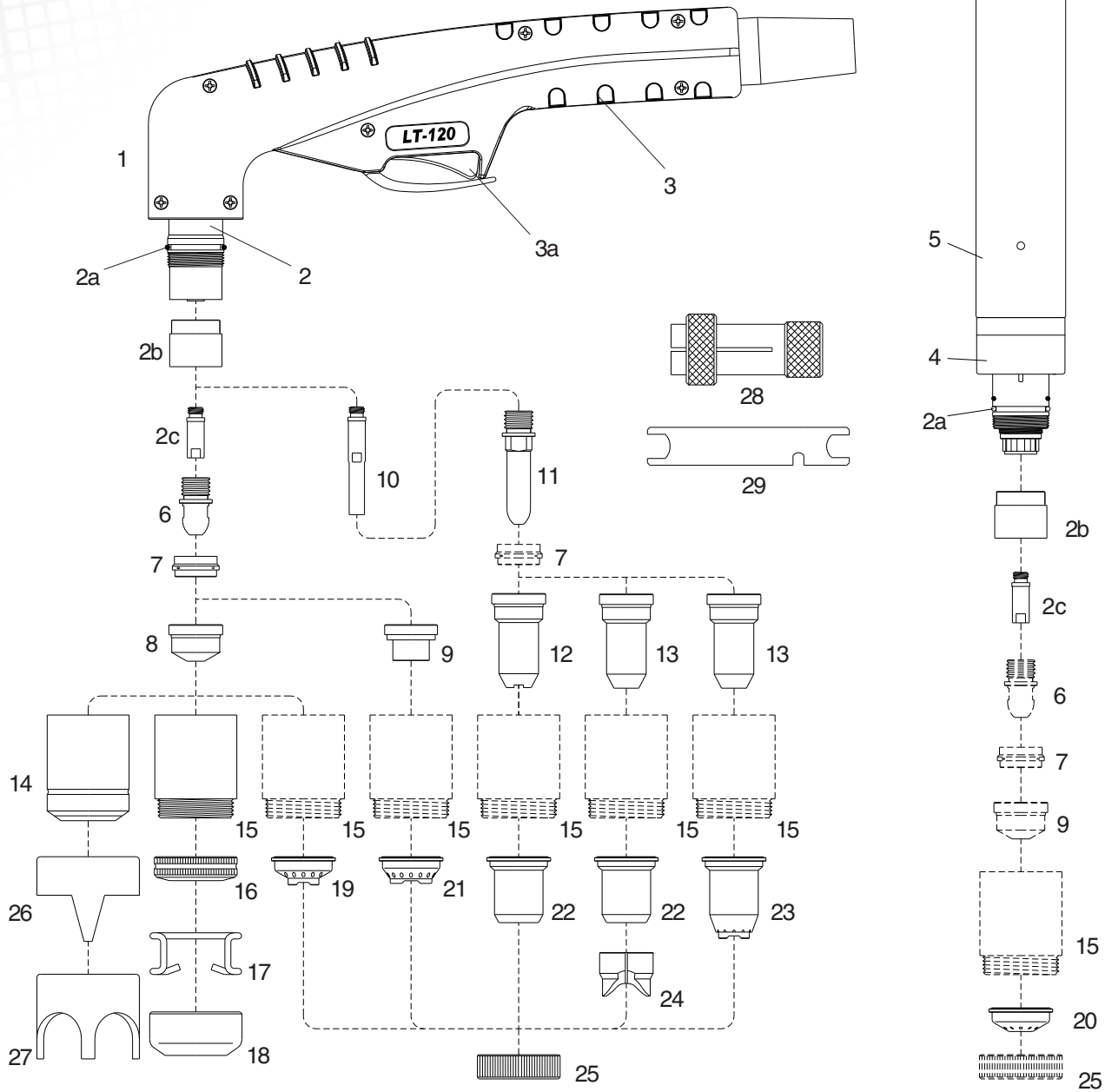
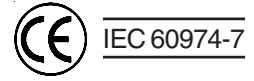
51848	Circle cutting attachment
51818	Cutting guide

Torches and Leads

see page # 15

Technical Data

Max Current :	120Amps
Duty Cycle:	120 Amps - 60%
Gas:	Air
Gas Pressure:	70 psi (4.5-5.0 bar)
Gas Flow:	380 scfh (180 lpm)
Post Flow Time:	90 sec. recommended
Pilot :	Electrode to Tip
Ignition:	HF



● Standard Layout
 H - Hand Torch
 M - Machine Torch



Replacement Parts

Torch parts

Item#	H	M	Code	Description
1			01201/KIT	Torch Head complete with handle
2	●		01201	Hand torch head
2a	●	●	02000.60	O - Ring
2b	●	●	60085	Front insulator
2c	●	●	06004	Diffusor
3	●		09706	Handgrip with microswitch
3a	●		07301.20	Switch
4		●	01400	Machine torch head
5		●	03310	Machine handle
6	●	●	52540	Electrode
7	●	●	60020	Swirl ring
8			51140/S	Tip long life ø 1,10
			51141/S	Tip long life ø 1,35
	●	●	51142/S	Tip long life ø 1,60
			51144.24	Gouging tip ø 2,4
9			51410	Contact tip ø 1,35
			51411	Contact tip ø 1,6
10			06005	Extended diffusor
11			52549	Extended electrode
12			51148	Extended tip (for contact cutting max. 50A)
13			51148.13	Extended tip ø 1,35 - 90A - (for 51958 + 51959 or 60380)
			51148.16	Extended tip ø 1,6 - 120A - (for 51958 + 51959 or 60380)
14			60328	Nozzle retaining cap
15	●	●	60348	Contact nozzle retaining cap
			60348/V	Contact nozzle retaining cap, Max.life
16	●		51952	Spring holder protection nut
17	●		51911	Spacer spring for code 51952
18			51953	Gouging spacer
19			51950	Spacer for contact cutting, hand (for use with item 8 only)
20		●	51951	Shield cup, machine (for use with item. 6 only)
21			51930	Spacer for contact cutting, hand (for use with item 9 only)
22			51957	Shield cup, hand (max. 50A)
23			51958	Spacer for contact cutting, hand
24			51974	Spacer for extended tips High Amp.
25		●	51959	Locking nut
26			60370	Double pointed spacer
27			60371	Crown spacer
28			60369	Extractor for swirl ring
29	●	●	60368	Wrench for electrode

Accessories

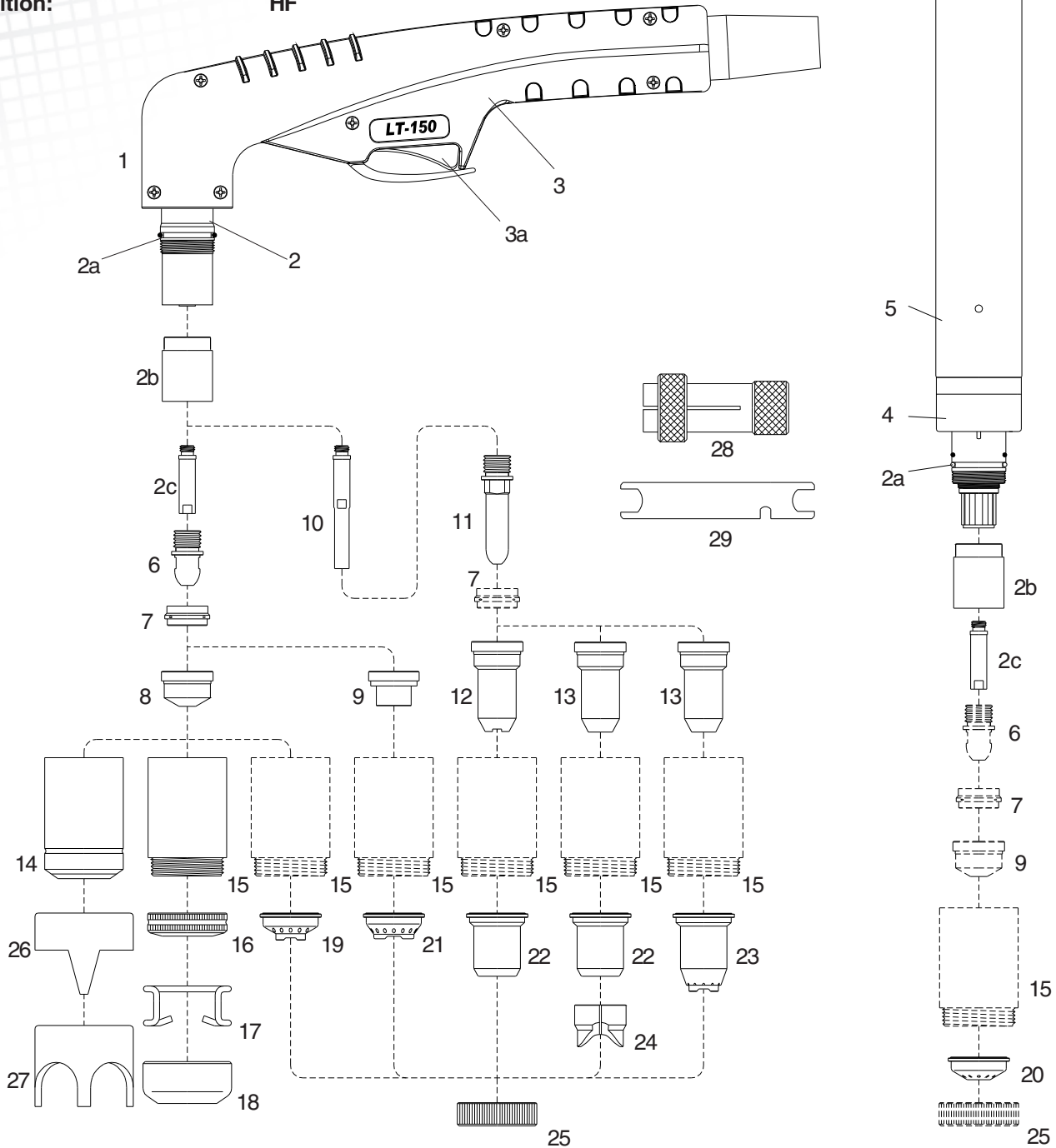
51851	Circle cutting attachment
51807	Cutting guide

Torches and Leads

see page # 15

Technical Data

Max Current : 150Amps
Duty Cycle: 150 Amps - 60%
Gas: Air
Gas Pressure: 70 psi (4.5-5.0 bar)
Gas Flow: 470 scfh (220 lpm)
Post Flow Time: 90 sec. recommended
Pilot : Electrode to Tip
Ignition: HF



● Standard Layout
 H - Hand Torch
 M - Machine Torch



Replacement Parts

Torch parts

Item#	H	M	Code	Description
1			02001/KIT	Torch Head complete with handle
2	●		02001	Hand torch head
2a	●	●	02000.60	O - Ring
2b	●	●	60085	Front insulator
2c	●	●	06004	Diffusor
3	●		09706	Handgrip with microswitch
3a	●		07301.20	Switch
4		●	04300	Machine torch head
5		●	03310	Machine handle
6	●	●	52540	Electrode
7	●	●	60020	Swirl ring
8			51140/S	Tip long life ø 1,10
			51141/S	Tip long life ø 1,35
			51142/S	Tip long life ø 1,60
	●	●	51143/S	Tip long life ø 1,80
			51144	Gouging tip ø 3.0
9			51410	Contact tip ø 1,35
			51411	Contact tip ø 1,6
			51412	Contact tip ø 1,8
10			06005	Extended diffusor
11			52549	Extended electrode
12			51148	Extended tip (for contact cutting max. 50A)
13			51148.13	Extended tip ø 1,35 - 90A - (for 51958 + 51959 or 60380)
			51148.16	Extended tip ø 1,6 - 120A - (for 51958 + 51959 or 60380)
			51148.18	Extended tip ø 1,8 - 150A - (for 51958 + 51959 or 60380)
14			60330	Nozzle retaining cap
15	●	●	60350	Contact nozzle retaining cap
			60350/V	Contact nozzle retaining cap, Max.life
16	●		51952	Spring holder protection nut
17	●		51911	Spacer spring for code 51952
18			51953	Gouging spacer
19			51950	Spacer for contact cutting, hand (for use with item 8 only)
20		●	51951	Shield cup, machine (for use with item. 6 only)
21			51930	Spacer for contact cutting, hand (for use with item 9 only)
22			51957	Shield cup, hand (max. 50A)
23			51958	Spacer for contact cutting, hand
24			51974	Spacer for extended tips High Amp.
25		●	51959	Locking nut
26			60370	Double pointed spacer
27			60371	Crown spacer
28			60369	Extractor for swirl ring
29	●	●	60368	Wrench for electrode

Accessories

51851	Circle cutting attachment
51807	Cutting guide

Torches and Leads

see page # 15



LT-Torches

H-35

	<i>RUBBER</i>	<i>COAXIAL</i>	<i>Description</i>
H 35	02900	02900CX	Hand torch complete with 4 mts cable (1/8" connection)
	02910	02910CX	Hand torch complete with 6 mts cable (1/8" connection)
	02980	02980CX	Air and power cable 4 mts 1/8"
	02985	02985CX	Air and power cable 6 mts 1/8"

LT-50 MT50

	<i>RUBBER</i>	<i>COAXIAL</i>	<i>Description</i>
LT-50	03050LT	03050LTX	Hand torch complete with 6 mts cable (1/8" connection)
	03051LT	03051LTX	Hand torch complete with 6 mts cable (central connector)
	03150LT	03150LTX	Hand torch complete with 12 mts cable (1/8" connection)
	03151LT	03151LTX	Hand torch complete with 12 mts cable (central connector)
	03240	03240CX	Air and power cable 6 mts 1/8"
	03250	03250CX	Air and power cable 12 mts 1/8"
MT50	03401	03401CX	Machine torch complete with 6 mts cable (central connector)
	03501	03501CX	Machine torch complete with 12 mts cable (central connector)
	03320	03320CX	Air and power cable 6 mts 1/8"
	03330	03330CX	Air and power cable 12 mts 1/8"

LT-70 MT70

	<i>RUBBER</i>	<i>COAXIAL</i>	<i>Description</i>
LT-70	03071LT	03071LTX	Hand torch complete with 6 mts cable (central connector)
	03171LT	03171LTX	Hand torch complete with 12 mts cable (central connector)
	03240	03240CX	Air and power cable 6 mts 1/8"
	03250	03250CX	Air and power cable 12 mts 1/8"
MT50	03471	03471CX	Machine torch complete with 6 mts cable (central connector)
	03571	03571CX	Machine torch complete with 12 mts cable (central connector)
	03320	03320CX	Air and power cable 6 mts 1/8"
	03330	03330CX	Air and power cable 12 mts 1/8"



LT-100 MT100

	<i>RUBBER</i>	<i>COAXIAL</i>	<i>Description</i>
LT-100	03081LT	03081LTX	Hand torch complete with 6 mts cable (central connector)
	03181LT	03181LTX	Hand torch complete with 12 mts cable (central connector)
	03092	03092CX	Air and power cable 6 mts 1/8" (1/8" connection)
	03192	03192CX	Air and power cable 12 mts 1/8" (1/8" connection)
MT100	03481	03481CX	Machine torch complete with 6 mts cable (central connector)
	03581	03581CX	Machine torch complete with 12 mts cable (central connector)
	03492	03492CX	Air and power cable 6 mts 1/8"
	03592	03592CX	Air and power cable 12 mts 1/8"

LT-120 MT120

	<i>RUBBER</i>	<i>COAXIAL</i>	<i>Description</i>
LT-120	01251LT	01251LTX	Hand torch complete with 6 mts cable (central connector)
	01351LT	01351LTX	Hand torch complete with 12 mts cable (central connector)
	04240	04240CX	Air and power cable 6 mts 1/8" (1/8" connection)
	04250	04250CX	Air and power cable 12 mts 1/8" (1/8" connection)
MT120	01451	01451CX	Machine torch complete with 6 mts cable (central connector)
	01551	01551CX	Machine torch complete with 12 mts cable (central connector)
	04320	04320CX	Air and power cable 6 mts 1/8"
	04330	04330CX	Air and power cable 12 mts 1/8"

LT-150 MT150

	<i>RUBBER</i>	<i>COAXIAL</i>	<i>Description</i>
LT-150	04051LT	04051LTX	Hand torch complete with 6 mts cable (central connector)
	04151LT	04151LTX	Hand torch complete with 12 mts cable (central connector)
	04240	04240CX	Air and power cable 6 mts 1/8" (1/8" connection)
	04250	04250CX	Air and power cable 12 mts 1/8" (1/8" connection)
MT150	04401	04401CX	Machine torch complete with 6 mts cable (central connector)
	04501	04501CX	Machine torch complete with 12 mts cable (central connector)
	04320	04240CX	Air and power cable 6 mts 1/8" (1/8" connection)
	04330	04250CX	Air and power cable 12 mts 1/8" (1/8" connection)

Torches with different cable covers available on request.

